

## Dual Ceiling Boom

### Technical Data

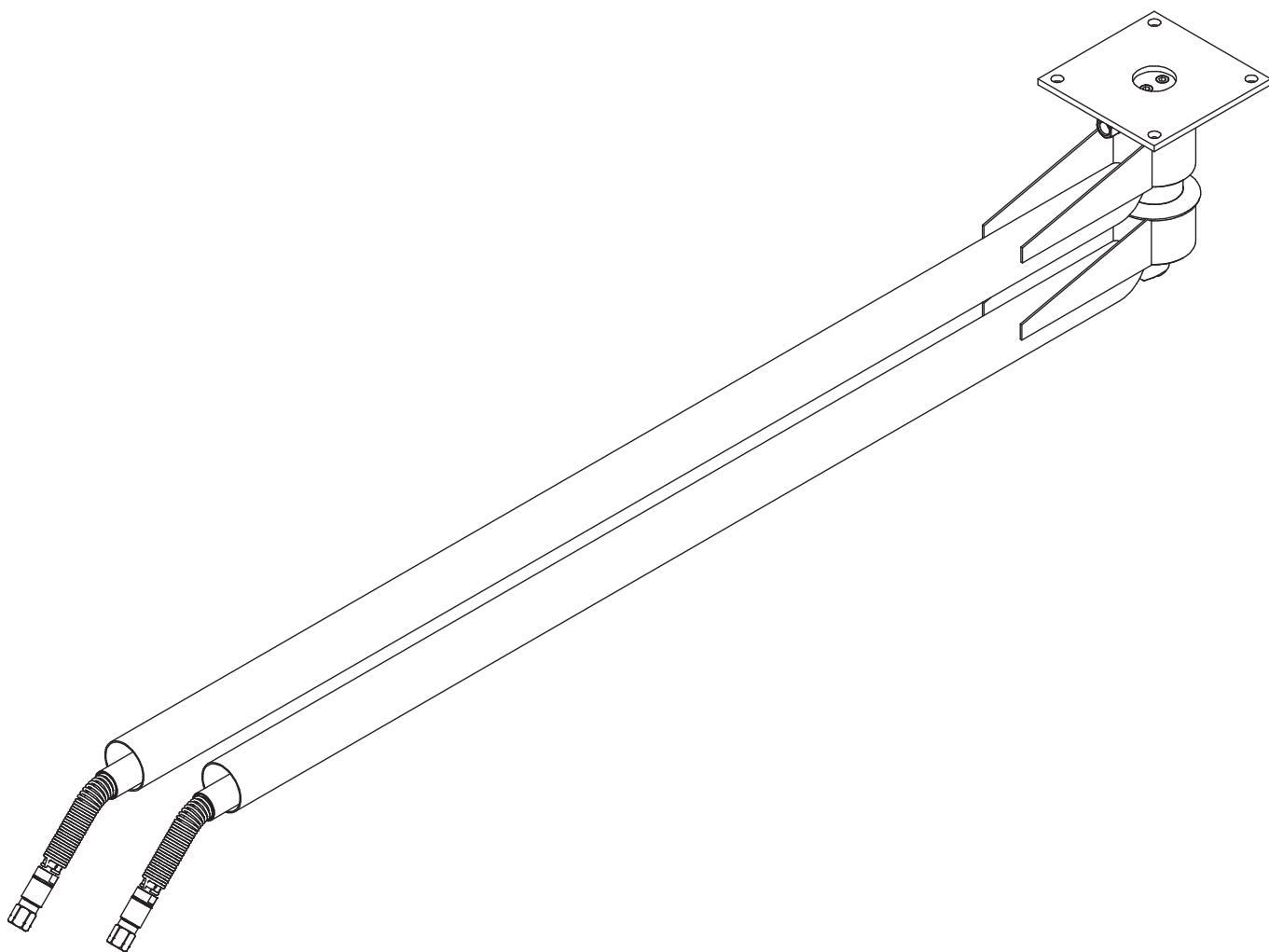
Pressure	4000psi (27.5Mpa)
Temperature	250°F
RPM	max. 30 rpm
Throughput medium	water, oil, air at pH 3-12

### Indication (original language German):

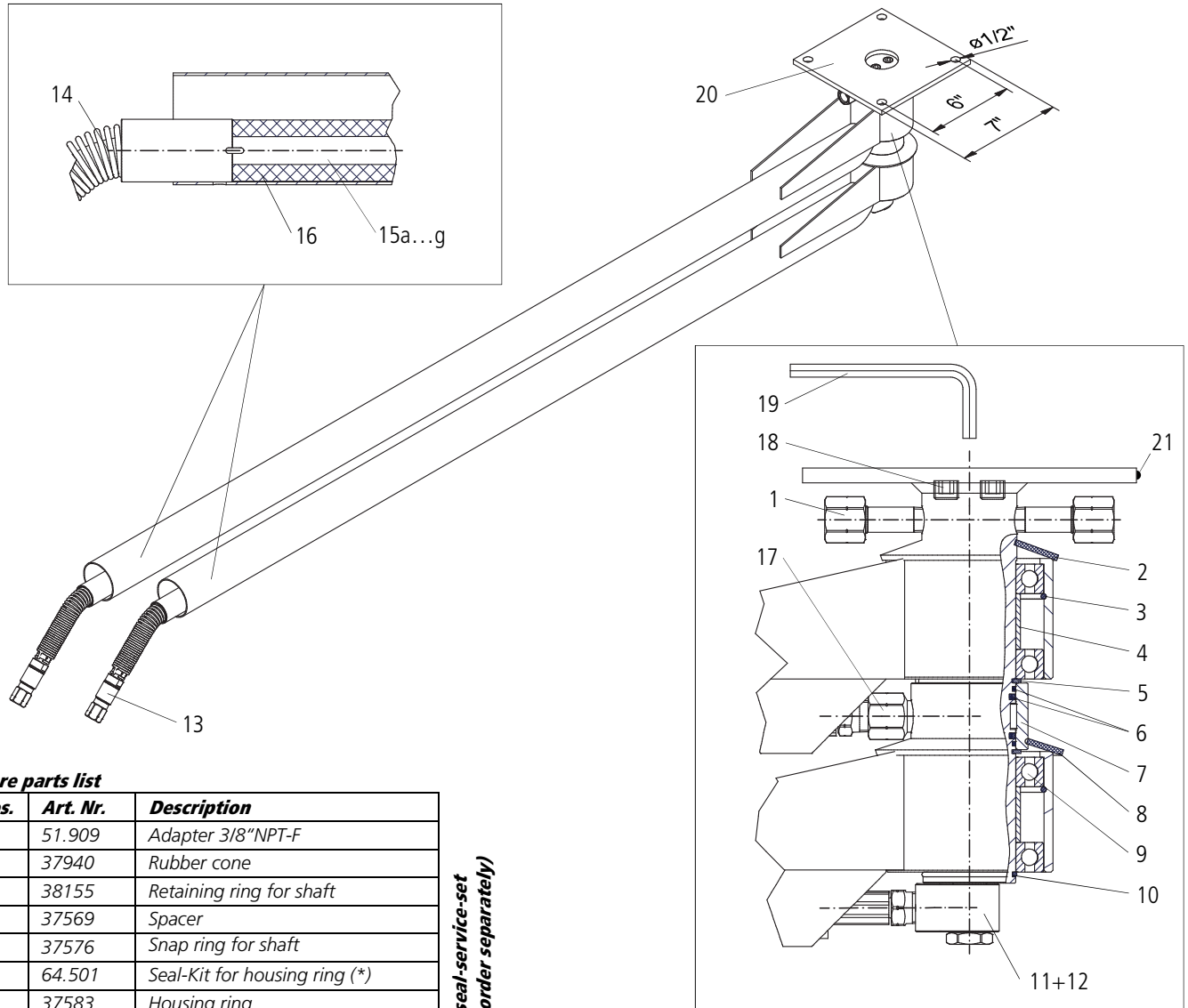
- Read all instructions, check overall conditions and safety requirements before initial operation of the product.
- Our product should only be installed by experienced users of high pressure equipment.
- Safety regulations and guidelines (Accident Prevention Rules) from the manufacturer of your high pressure cleaner are applicable.
- No modifications to the product are permitted.

### Caution:

- Always use protection gear when using products connected to high pressure.
- Before any maintenance, turn off the high pressure water supply, e.g.: turn off and secure the power switch.



## Dual Ceiling Boom



### Spare parts list

Pos.	Art. Nr.	Description
1	51.909	Adapter 3/8"NPT-F
2	37940	Rubber cone
3	38155	Retaining ring for shaft
4	37569	Spacer
5	37576	Snap ring for shaft
6	64.501	Seal-Kit for housing ring (*)
7	37583	Housing ring
8	901.972	Rubber cone
9	12295	Ball bearing
10	37840	Retaining ring for shaft
11	40.019	Swivel 90°
12	40.502	Seal-Kit for Swivel 90° (**)
13	30.654	Swivel 3/8"NPT-F
14	901.858	Tension spring
15a	901.860	HP-Hose for arm L=4' 9"
15b	901.862	HP-Hose for arm L=5' 3"
15c	901.864	HP-Hose for arm L=5' 9"
15d	901.865	HP-Hose for arm L=6' 3"
15e	901.866	HP-Hose for arm L=6' 9"
15f	901.867	HP-Hose for arm L=7' 5"
15g	901.868	HP-Hose for arm L=8' 2"
16	900.275	Insulation hose, black
17	901.935	Coupling
18	901.043	Stud bolt G1/4"xM
19	901.080	Hexagon socket wrench

\*\*Exchange with seal-service-set  
V-1346 (please order separately)

\*Exchange with seal-service-set  
V-1108 (please order separately)

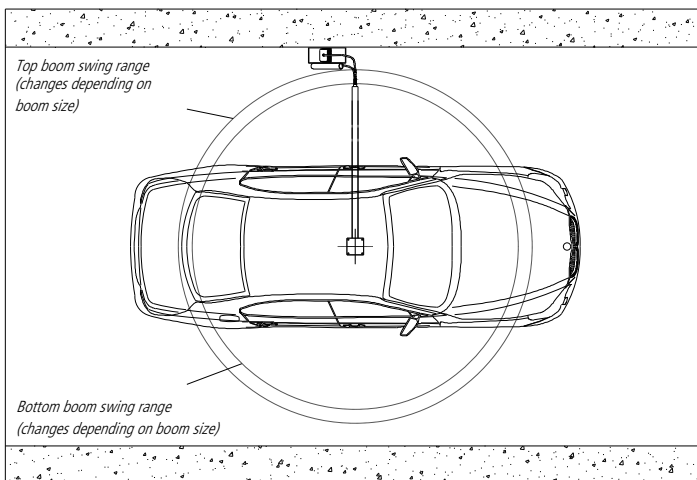
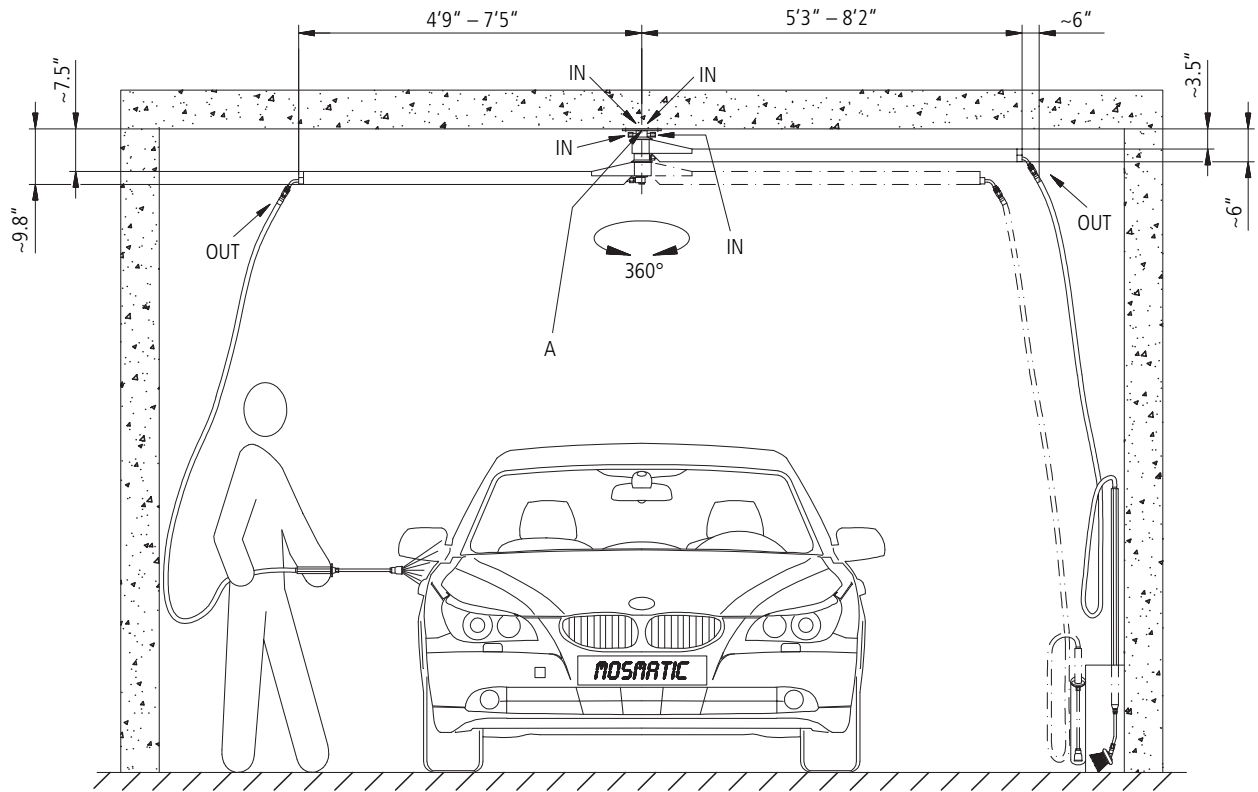
### Assembly instructions (original language German)

- Install the ceiling boom with the mounting plate (20) to the concrete ceiling or to the steel beam.
- Tightly fasten the high pressure hose or the high pressure pipe connection coming from the high pressure pump, to either top or side connection.
  - for side inlet: mount adapters (1) on the side and plug top inlets with stud bolts (18).
  - for top inlet: mount adapters (1) on top and plug side inlets with stud bolts (18).
- Tightly fasten the high pressure hose with lance or brush to the swivel (13). Recommendation: Use the inlet adaptor "right" (for the top boom) for low pressure (side with marking (21) at mounting plate (20)). Use the inlet adaptor "left" (for the lower boom) for high pressure (side without marking). The marking (21) is valid also for the top inlets.

 We recommend checking swivel-connections once a year for normal wear and tear.

**No greasing required.**

*Dual Ceiling Boom*



*Mounting plate (A)*

*Thickness: 5/16"*

*Bearable hole load: min. 30'000N (e.g.: bolt 1/2")*

*- other versions and sizes upon request*